



Morgans

PROPERTY

80 Douglas Drive, Dunfermline, KY12 9YQ

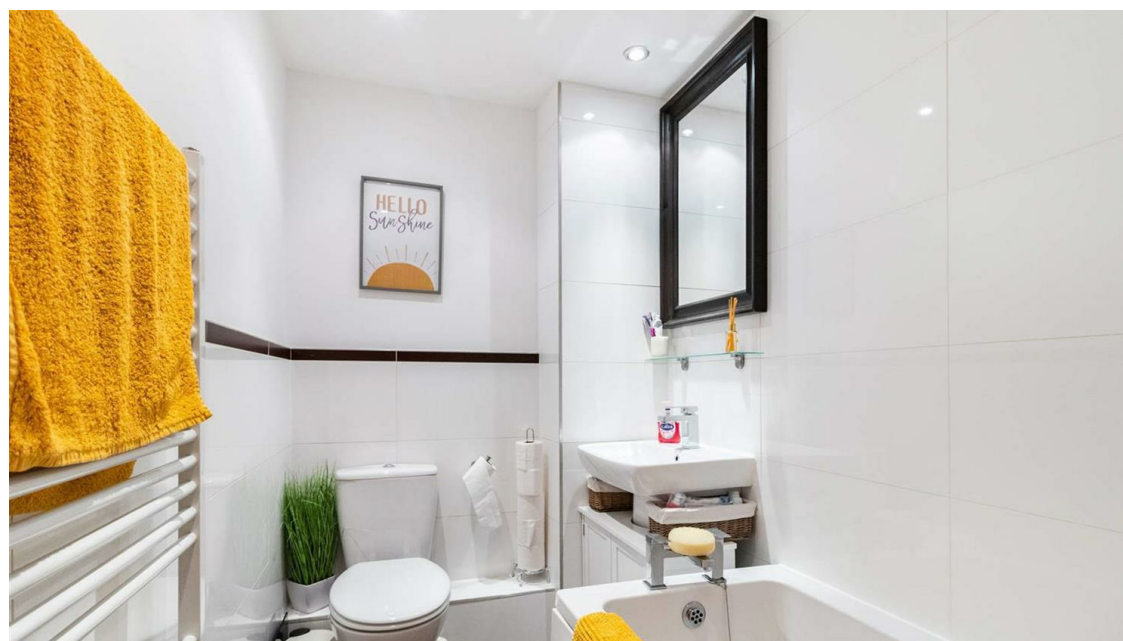
Offers In The Region £145,000







Excellent mid terraced villa with nice outdoor space and summerhouse/outdoor office, with raised decking and private gardens with residents parking adjacent. This property is situated on an elevated position within popular well established estate west of the city, with lovely views over town from the upper level. The property is offered in move in condition and briefly comprises entrance porch, lounge, dining kitchen and on the upper level two double bedrooms with bathroom and shower. Access to attic. The property is double glazed with gas central heating.





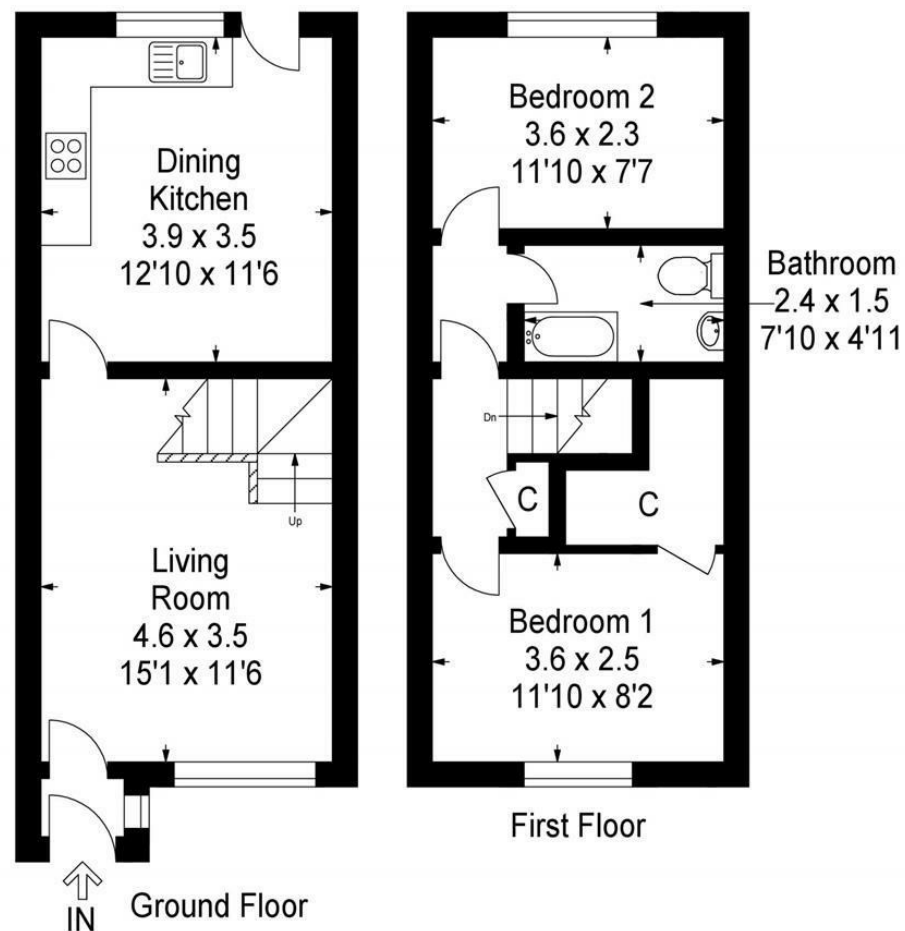
LOCATION

The ancient capital of Dunfermline won its bid to have official status city in May 2022, as part of the civic honour's competition to celebrate the Queen's platinum jubilee. The City of Dunfermline is of considerable historic interest and is the resting place of King Robert the Bruce. Carnegie's Birthplace museum, the Abbey and Abbot House reflect the historic interest of the city, whilst recent developments have seen Dunfermline move into the modern era with Carnegie Museum and Library. Dunfermline is located approximately five miles from the Forth bridges and is therefore particularly popular with commuters to Edinburgh and many parts of the central belt with easy access to the M90 motorway with its direct links to Edinburgh, Perth and Dundee and across the Kincardine Bridge by way of motorways to Stirling, Glasgow and the West. It benefits from a full range of shops, social and leisure facilities and educational establishments. The local railway stations provide a regular service to Edinburgh with intercity links to other parts of the UK. There are regular and convenient bus services both local and national.

EXTRAS INC. IN SALE

All floor coverings, blinds, bathroom and light fittings together with integrated appliances.





This plan is for layout guidance only and is not drawn to scale. Whilst every care is taken in the preparation of this plan, please check all dimension and shapes before making any decision reliant upon them. All room dimensions taken through cupboard/wardrobes to wall surface where possible or to surfaces indicated by arrow heads. (ID 110927)

© VistaBee 2022



SOLICITORS | PROPERTY

33 East Port, Dunfermline, Fife, KY12 7JE

Tel: 01383 620222 Fax: 01383 621213

www.morganlaw.co.uk



espc

s1homes.com

rightmove

Zopla.co.uk

onTheMarket.com



AGENTS NOTE These particulars do not form part of any contract and the statements or plans contained herein are not warranted nor to scale. Approximate measurements have been taken by electronic device at the widest point. Services and appliances have not been tested for efficiency or safety and no warranty is given as to their compliance with any Regulations. No movable items will be included in the sale.